



# HANDLEIDING/MANUAL/ANLEITUNG INDUSTRIAL LINEAR BATTEN

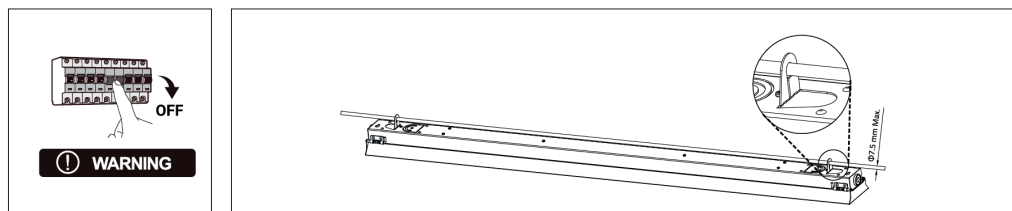
KONRAD-120D / KONRAD-150D



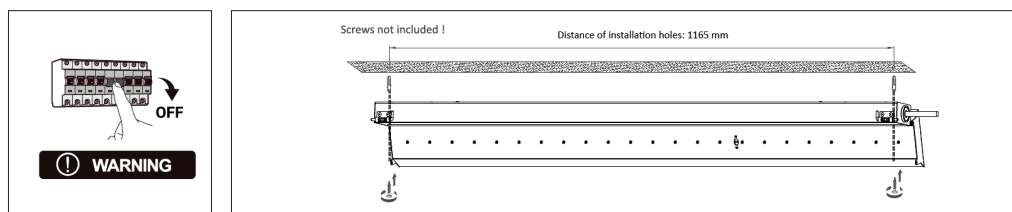
**KOOPMAN**INTERLIGHT.NL  
**INTERLIGHT**GMBH.DE



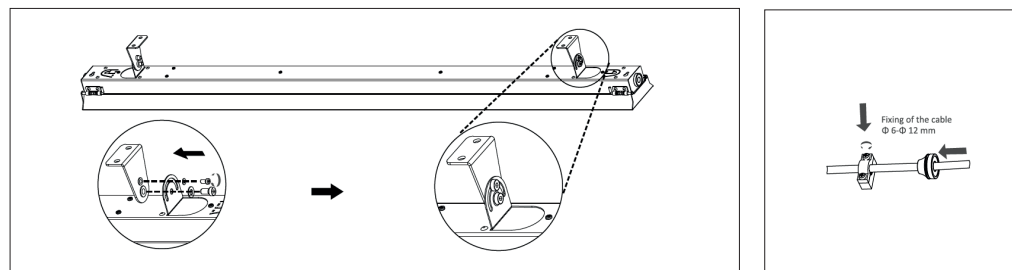
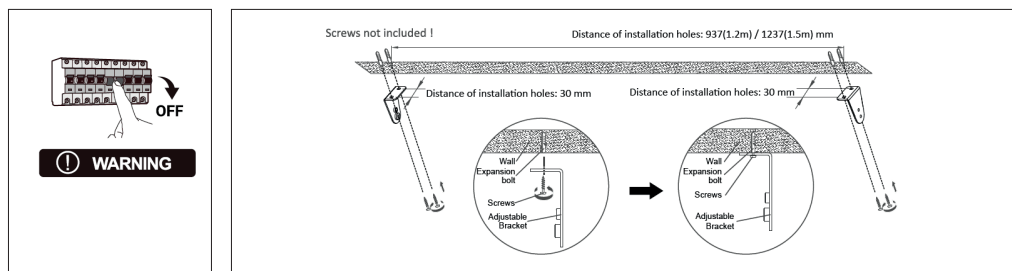
### Installatie / Installation / Installation - Suspending Rod



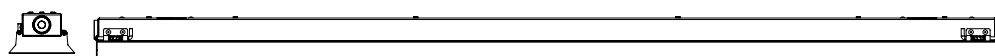
### Installatie / Installation / Installation - Surface mounted



### Installatie / Installation / Installation - Adjustable bracket

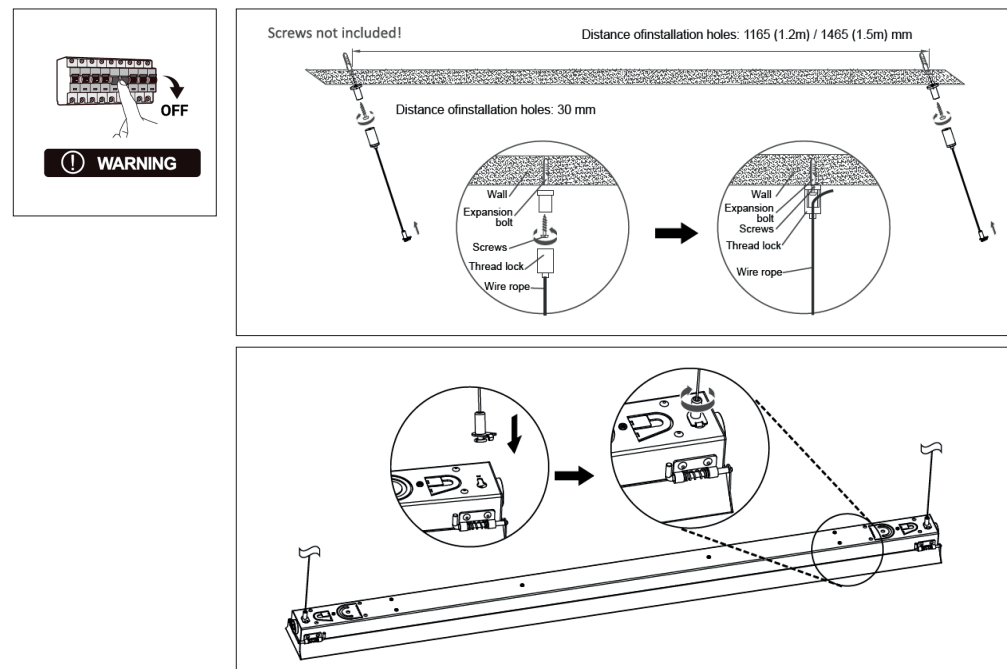


### Formaat / Dimensions / Abmessungen



**KONRAD-120D IL-IBN12080K4** 1200 x 90 x 55mm  
**KONRAD-150D IL-IBN150100K4** 1500 x 90 x 55mm

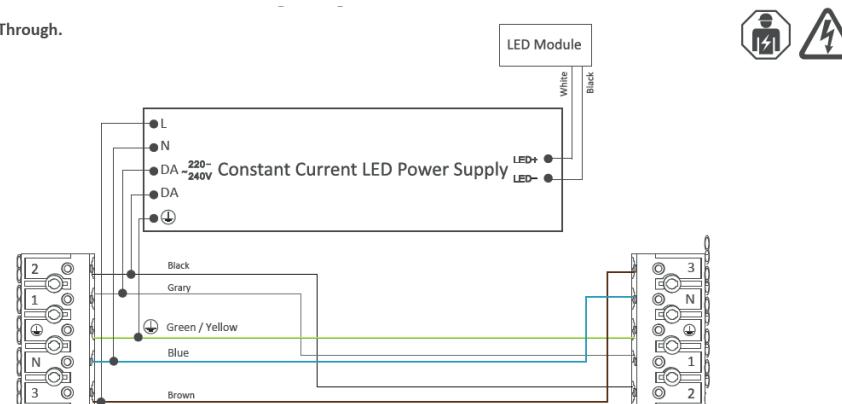
### Installatie / Installation / Installation - Suspending Wire



### Wiring Diagram

#### Dimmable Wiring Through.

Mains terminal  
 Min. 5x0,75mm<sup>2</sup>  
 Max. 5x2,5mm<sup>2</sup>



**C**

- (NL) Dit product bevat een lichtbron van energie-efficiëntieklasse C.  
**Voor meer informatie over dit product: [www.koopmaninterlight.nl](http://www.koopmaninterlight.nl)**
- (EN) This product contains a light source of energy efficiency class C.  
**For more information on this product: [www.koopmaninterlight.nl](http://www.koopmaninterlight.nl)**
- (DE) Dieses Produkt enthält eine Lichtquelle der Energieeffizienzklasse C Für weitere  
**Informationen zu diesem Produkt: [www.koopmaninterlight.nl](http://www.koopmaninterlight.nl)**

